

Lavoisier state-of-the-art plastic container

Highly compatible material

The solution is only in contact with polypropylene. Both the multilayer film and the inner membranes of the medication and outlet ports contain only polypropylene.

Polypropylene can be sterilized at a higher temperature as it resists heat better than other olefins.

Designed for a safe and easy handling

Designed with rounded upper and lower corners that guarantee handling without accidental punctures.

Integrated eyelet support for an easy and safe handling of the container during the infusion.



Product information

Inclusion of batch number and expiration date

High sealing resistance

High resistance to pressure cuffs responding satisfactorily to 400 mmHg pressure for 72 hours.

Lavoisier port system

Medication and outlet ports designed with rigid and long tubes to avoid perforation due to needle insertion.

Safe attachment of the infusion set due to its internal membrane.

No parts of the cover have to be removed/broken in order to access the outlet port.

Guidelines for Lavoisier PP bag use

Overwrap removal

The overwrap serves as a moisture barrier. It is intended to limit evaporative moisture loss from the primary solution container.



The overwrap is designed to be opened by pulling apart the two sheets of the overwrap.



The recommended method to remove the overwrap is to peel off sheet by the corner while holding the other sheet at one end and carefully remove the solution container.

The overwrap should not be removed until product is to be used.

Container inspection

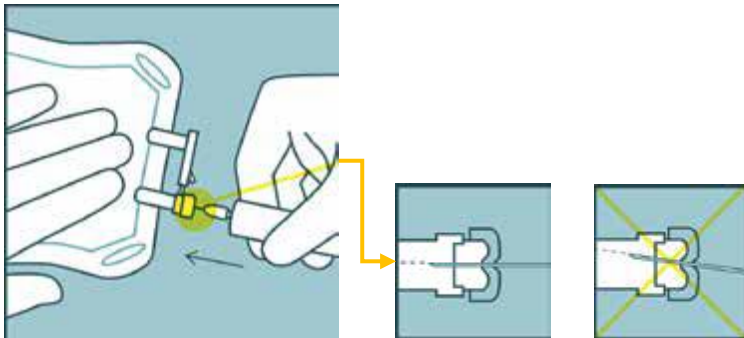
Visually inspect the container for particulate matter and discoloration.

Check for minute leaks by squeezing inner container firmly. **If leaks are found, discard solution as sterility may be impaired.**

If the outlet port protector is damaged, detached, or not present, discard container as solution path sterility may be impaired.

Do not administer unless the solution is clear and seal is intact.

To add medication



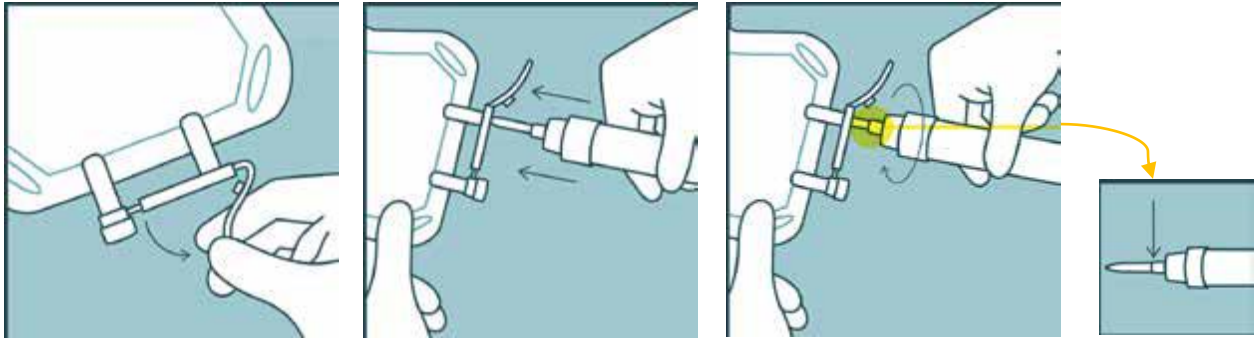
Prepare medication site. Using syringe with 19 to 22 gauge needle, securely hold the container and insert the needle through the center of the medication port and inject.

Insert the needle perpendicular to the point of addition.

The compatibility of the additives with Sodium Chloride 0.9% must be checked before adding a medication.

Guidelines for Lavoisier PP bag use

Attach administration set

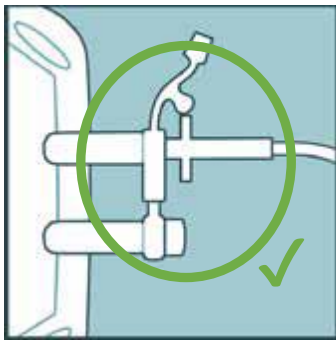


Suspend the container from eyelet support and remove protector from outlet port at the bottom of the container.

Hold the container properly and attach the administration set.

While advancing through the tube, a slight resistance will gradually appear.

To ensure proper connection and prevent leakage, push the administration set using a rotary motion up to the shoulder of the spike.



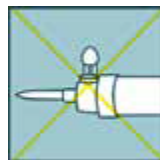
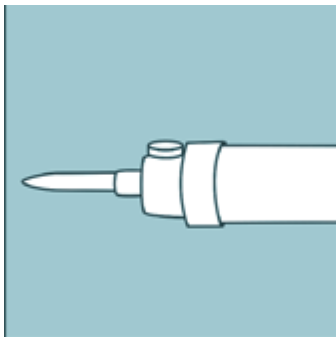
Correctly attached.



Not correctly attached.

Use non-vented administration sets

Lavoisier PP bag has been designed to work without venting. No air is required to withdraw the solution. Air entering through the administration set could slow or even stop the infusion due to air bubbles.



Administration sets should come without air venting. If vented administration sets are used, **be sure air venting inlet remains closed during the infusion.**

After opening the container, the contents should be used immediately and should not be stored for a subsequent infusion. Do not reconnect any partially used containers. Discard any unused portion.

Do not connect flexible plastic containers in series in order to avoid air embolism due to possible residual air contained in the primary container. Use of a vented intravenous administration set with the vent in the open position could result in air embolism. Vented intravenous administration sets with the vent in the open position should not be used with flexible plastic containers.