

JOBST® ULCER CARE™

THE 2-IN-1 COMPRESSION SYSTEM

RECOMMENDATIONS FOR USE



Cover any open wounds with an appropriate wound dressing e.g. **Cutimed® Sorbion** before donning the **JOBST® UlcerCARE™** liner. The **JOBST® UlcerCARE™** stocking with zipper is easily applied over the liner.



While the **JOBST® UlcerCARE™** liner may be worn 24 hours a day, the patient must remove the medical stocking with zipper during bed rest.



The **JOBST® UlcerCARE™** liner should be changed in accordance with daily hygiene needs and wound inspection requirements.



After complete healing of the venous ulcer, continued use of **JOBST® UlcerCARE™** or any other appropriate medical compression stocking (e.g. **JOBST® Medical LegWear**) is recommended to help prevent recurrence.

Contraindications

The **JOBST® UlcerCARE™** compression system is contraindicated when any of the following conditions are present:

- Severe arterial insufficiency
- Congestive heart failure (decompensated)
- Cutaneous infections (skin infections)
- Dermatitis in the acute or exudative stages
- Diabetic ulcers

Cautions

- Not to be used over open wounds without appropriate wound dressing
- Medical stocking with zipper should only be used by ambulatory patients
- Not to be used in case of sensitivity to the stocking material

JOBST® UlcerCARE™

	Ankle	Calf	JOBST® UlcerCARE™ Zipper Stocking and Liners		Pack Quantity (Stocking/Liners)	JOBST® UlcerCARE™ Replacement Liners	Pack Quantity (Liners)
			Zipper on Right Side	Zipper on Left Side			
Small	18 – 21cm	29 – 35cm	73631-61	73631-21	1 Stocking/2 Liners	73632-21	3 Liners
Medium	21 – 24cm	34 – 41cm	73631-62	73631-22	1 Stocking/2 Liners	73632-22	3 Liners
Large	24 – 27cm	40 – 47cm	73631-63	73631-23	1 Stocking/2 Liners	73632-23	3 Liners
X-Large	27 – 30cm	46 – 54cm	73631-64	73631-24	1 Stocking/2 Liners	73632-24	3 Liners
XX-Large	30 – 33cm	48 – 56cm	73631-65	73631-25	1 Stocking/2 Liners	73632-25	3 Liners
XXX-Large	33 – 36cm	50 – 58cm	73631-66	73631-26	1 Stocking/2 Liners	73632-26	3 Liners
XXXX-Large	36 – 39cm	52 – 60cm	73631-67	73631-27	1 Stocking/2 Liners	73632-27	3 Liners

Please refer to the product label and / or package insert for full instructions on the safe use of these products.

JOBST®
Comfort, Health and Style!

JOBST® ULCER CARE™

A PATIENT FRIENDLY SOLUTION FOR THE MANAGEMENT OF VENOUS LEG ULCERS



BSN medical Australia & New Zealand

L6, 211 Wellington Road,
Mulgrave, Victoria, Australia 3170

www.bsnmedical.com.au
www.bsnmedical.co.nz

BSN0170

03/2017

JOBST® Customer Service Australia
T 1300 998 810 F 1300 998 820

JOBST® Customer Service New Zealand
T 0508 998 810 F 0508 998 820

®Registered Trademark

BSNmedical

THERAPIES. HAND IN HAND.

BSNmedical

UNDERSTANDING VENOUS LEG ULCERS

Compression can be considered the cornerstone in the therapy of venous leg ulcers. Adequate compression supports venous flow and shows effects on deep venous haemodynamics¹ – ultimately providing large improvements in pain, mobility and general quality of life for the patient.

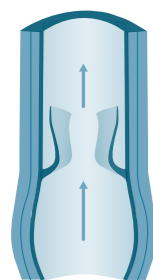
HOW DO VENOUS LEG ULCERS DEVELOP?

Venous insufficiency is the most common underlying cause of a venous leg ulcer. The compromised blood flow to the heart is mainly caused by venous valve incompetence. The resulting reflux leads to an ambulatory venous hypertension which also extends into the capillaries. As a consequence, nutrients and oxygen are unable to diffuse to the skin, causing death of skin tissue and the development of a venous leg ulcer.

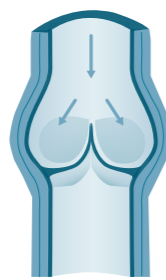


Venous ulcers are characteristically located inside the lower extremity.

Regular function of venous valves

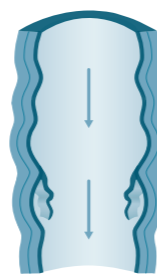


Open valve:
Blood can flow
towards the heart.



Closed valve:
Blood cannot flow
back towards distal.

Malfunction of venous valves



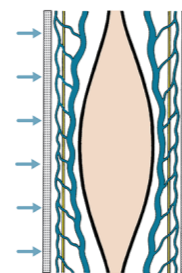
Deficient valve:
Allows the venous
blood to reflux.

COMPRESSION AND STIFFNESS FACTOR

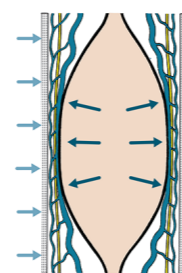
Adequate compression is necessary when venous flow is impaired. As venous valves are compromised, a sustained compression of 40 mmHg or more at the ankle is the recommended pressure to support venous return.¹

At this point, the specific stiffness of a compression device becomes a crucial factor. The higher the stiffness, the higher the working pressure and the effect of the muscle pump.

Compression provides the best conditions to heal the ulcer: the subsequent reduction of the local blood volume leads to lower venous reflux and the reduction of ambulatory venous hypertension.



The pressure, exerted onto the body from the outside with the muscles at rest, is called "resting pressure".



"Working pressure" is exerted temporarily onto the body as the muscles are working and the diameter of the body part increases.

1. Position Document: Understanding Compression Therapy. 1st ed. United Kingdom: MEDICAL EDUCATION PARTNERSHIP LTD; 2003:1-17. Available at: http://ewma.org/fileadmin/user_upload/EWMA.org/Position_documents_2002-2008/Compression.pdf. Accessed January 5, 2017.

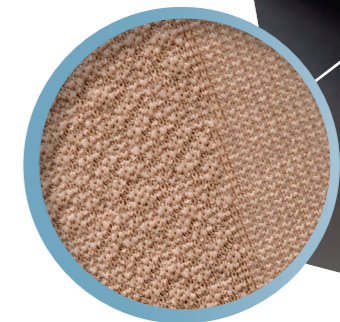
JOBST® ULCER CARE™ – A CONVENIENT, EASY TO USE, TWO LAYER COMPRESSION SYSTEM

JOBST® UlcerCARE™ enables effective management of a venous leg ulcer while offering ease of use – the perfect combination for providing patients with a higher quality of life.

JOBST® ULCER CARE™

- provides graduated compression of 40 mmHg the recommended pressure for the healing of venous leg ulcers.¹
- delivers a high stiffness factor to provide effective compression.
- is a 2-in-1 system for easy handling by patients or caregivers.
- is washable for improved hygiene.

The special design of the outer stocking's pattern provides more friction to the liner, enhancing the system's stiffness.



JOBST® UlcerCARE™



JOBST® UlcerCARE™ Liner:

- provides mild compression (17mmHg) for non-ambulatory patients to help manage lower leg oedema during bed rest.¹
- may be worn 24 hours a day by non-ambulatory patients and to hold a wound dressing in place.
- has integrated heel and toe for high wearing comfort.
- contains silk to promote healthy skin, facilitate donning and provide maximum compliance.



JOBST® UlcerCARE™ Outer Stocking:

- designed for patient's self-management to facilitate easy changing of wound dressing and to allow for improved personal hygiene, e.g. bathing.
- interacts with low friction on the liner making it easy to don.
- has an improved zipper for easy donning.
- available with zipper on left or right side for comfortable closure on the opposite side of the wound.
- has integrated heel and open toe for high wearing comfort.